



IFLA EUROPE

INTERNATIONAL FEDERATION
OF LANDSCAPE ARCHITECTS

EUROPEAN REGION OF THE INTERNATIONAL FEDERATION OF LANDSCAPE ARCHITECTS

IFLA EUROPE



IFLA Europe representatives:

Diana Culescu, IFLA Europe Secretary General (Romania)

Daniela Micanovic, IFLA Europe Executive Secretary (Belgium)



IFLA EUROPE

INTERNATIONAL FEDERATION
OF LANDSCAPE ARCHITECTS

IFLA Europe is the European Region of the International Federation of Landscape Architects, formed by **34 National Associations**, professional landscape architects associations/organisations (in **26** EU Member States), representing around 18000 members - Landscape Architects practicing in a very wide range of activities.





IFLA EUROPE

INTERNATIONAL FEDERATION
OF LANDSCAPE ARCHITECTS

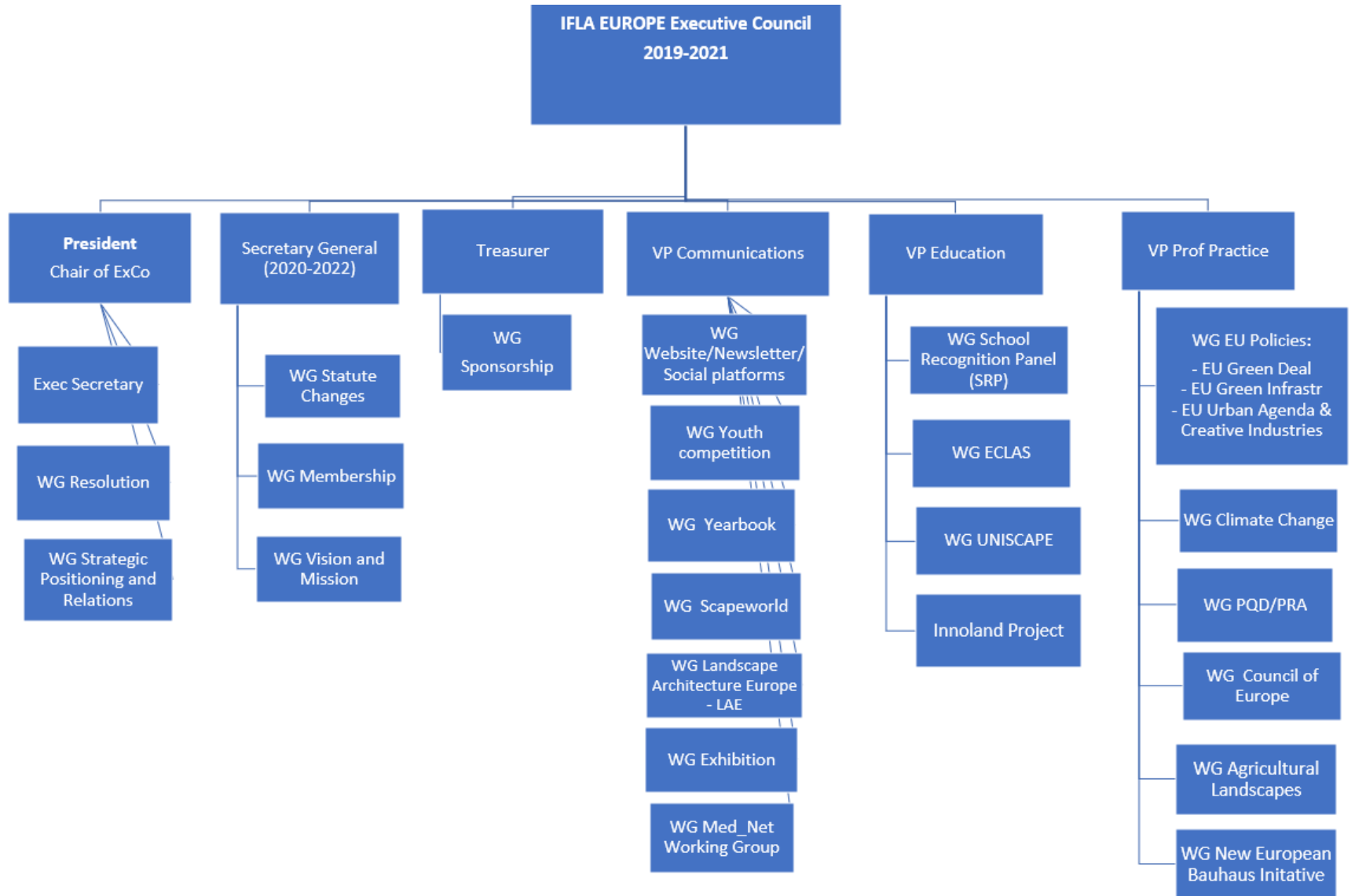
IFLA Europe Objectives and mission

- To establish, develop and promote the highest standards of education and professional practice influencing the widest range of landscape architectural operations (including but not limited to planning, design, ecology, biodiversity, management, maintenance, culture, conservation and socio-economics);
- To promote landscape architecture and the recognition of the professional title of landscape architect as an acknowledged independent profession;
- To consult and collaborate with the European Union, the Council of Europe and other appropriate organisations in the planning, preparation, promotion, instigation, monitoring and assessment of all programmes, directives and accords relating to the natural, semi-natural and man-made landscape and environment;
- To represent and promote the interest of all IFLA EUROPE members without prejudice to the principals of the scientific, educational, professional, learning and artistic aims and nature of IFLA EUROPE;
- To emphasise the role that landscape architect plays in fighting climate challenges as fundamental in order to secure a sustainable future;
- To actively participate in EU Green Deal, Climate Pact, UN SDGs, EU Urban agenda and offer solutions for sustainable development;
- To provide sustainable, resilient landscape design, planning and management necessary for fighting climate changes and challenges.



IFLA EUROPE

INTERNATIONAL FEDERATION
OF LANDSCAPE ARCHITECTS





IFLA EUROPE

INTERNATIONAL FEDERATION
OF LANDSCAPE ARCHITECTS

IFLA Europe - cooperation with European organisations

ACE	The Architects' Council of Europe
CoE	Council of Europe
CDCPP	CoE Steering Committee for Culture, Heritage and Landscape
ECLAS	European Council of Landscape Architecture Schools
EEA	European Environmental Agency
EEB	European Environmental Bureau
ECTP-CEU	European Council of Spatial Planners
ELCA	European Landscape Contractors Association
Europa Nostra	Pan-European Federation for Cultural Heritage
UNISCAPE	European Network of Universities for the implementation of the European Landscape Convention
Global organisations at European level: ICOMOS Europe, UIA (International Union of Architects) European Regions, UNESCO	



IFLA EUROPE

INTERNATIONAL FEDERATION
OF LANDSCAPE ARCHITECTS

Communication

IFLA Europe Communication Committee objectives are:

- Enhance IFLA Europe Communication Strategy with clear objectives to raise awareness about IFLA Europe and its activities;
- Raise the profile of Landscape Architect profession
- Underline the importance and the role of Landscape Architects in fighting climate change and (re)building more sustainable future
- Promote IFLA Europe members and their activities.



IFLA EUROPE

INTERNATIONAL FEDERATION
OF LANDSCAPE ARCHITECTS

Communication Committee main activities

[- Website](#)

[- Social networks](#) – IFLA Europe is present on the following social networks:

Facebook – 9884 followers

LinkedIn – 7741 members

Twitter – 1695 followers

Instagram – 1642 followers

[- IFLA Europe Yearbook](#) – each year IFLA Europe has one topic that is same for the General Assembly, Regional Conference, IFLA Europe Resolution, Pecha kucha and Youth competition. Yearbook is a collection of Pecha kuchas - views, opinions, experiences that our National Associations have on annual General Assembly

[Newsletter](#)– IFLA Europe produces monthly newsletters with information/news from IFLA Europe, its members, IFLA World and Regions, partners and partner organisations.

[- IFLA Europe Resolution](#)

[- IFLA Europe Exhibition “Landscape as common ground”](#)

IFLA EU members provided exemplar Landscape Architecture projects - 61 projects from 24 countries associated in IFLA Europe.

[IFLA Europe Student and Young Professionals’ Competition](#) – competition on current General assembly topic for landscape architecture students (currently enrolled in European landscape architecture programmes) and young professionals (up to 35 years of age) from Council of Europe countries.



IFLA EUROPE

INTERNATIONAL FEDERATION
OF LANDSCAPE ARCHITECTS

Education

IFLA Europe Education Committee objectives are to:

- Promote common IFLA Europe Education guidelines to National Associations and European Universities/schools teaching landscape architecture programmes.
- Ensure solid Landscape architecture education across Europe for effective professional practice.
- Offer guidance to associations wishing to set up accreditation systems if not already in place and offer advice for the development of new schools with the support from the recognition panel if requested.
- Promote a common education platform with ECLAS and ensure cooperation between academic and professional organisations promoting landscape valuation.
- In countries where landscape architecture as a profession requires more visibility and recognition, assist National Associations in contacts with national governments and policy makers.



IFLA EUROPE

INTERNATIONAL FEDERATION
OF LANDSCAPE ARCHITECTS

Education Committee main activities

IFLA EUROPE School Recognition Panel (SRP)

- Promote common IFLA Europe education guidelines to National Associations and European Universities/schools teaching landscape architecture programmes. IFLA Europe recognition covers **108** schools in Europe and a total of **230** Landscape Architecture programmes.

- **InnoLAND project funded by Erasmus+** - in cooperation with 5 Universities across Europe (**Finland, Lithuania, Hungary, Austria, Portugal**) and **LE:Notre Institute, project was developed** to facilitate transparency and recognition of skills and qualifications of Landscape Architecture professionals in the EU by developing Common Training Framework for the Landscape Architecture Profession i) implementing PQD requirements to foster automatic recognition of LA profession in Europe; ii) establishing pan-European quality standards for LA study programmes and homogenizing landscape architecture education in Europe; and iii) developing an exemplar master study programme framework in line with the European CTF.



IFLA EUROPE

INTERNATIONAL FEDERATION
OF LANDSCAPE ARCHITECTS

Professional Practice

Professional Practice Committee objectives are to:

- Establish the highest standards of professional practice in design and planning of the landscape, its management, conservation and development.
- Promote the EC Professional Qualification directive in cooperation with National Associations.
- Regulation of the profession at national level and work towards automatic profession recognition at EU level.
- Promote Nature based solutions and actively participate in activities related to EU Green Deal and achieving First Carbon Free Continent by 2050.
- Pursue IFLA Europe's growth: membership enrolment. Assist establishment of National Associations in countries where IFLA Europe is not represented (CoE countries), address issues of concern to the membership, align Statutes of members with IFLA Europe Statutes and review and develop membership services.



IFLA EUROPE

INTERNATIONAL FEDERATION
OF LANDSCAPE ARCHITECTS

Professional Practice Committee main activities

EU Policy Working Group, Climate Change, Green Infrastructure -

IFLA Europe and its members realise fully the importance of EU Green Deal, Climate Pact and related EU and global policies (UN SDGs) and as Landscape architects we support and include sustainable principles in the design and development of sites in urban and rural environment.

Council of Europe Working Group

European Landscape Convention - aimed to encourage public authorities to adopt policies and measures at local, regional, national and international level for protecting, managing and planning landscapes throughout Europe. IFLA Europe is a consultant NGO and has Observer status with the CoE Steering Committee for Culture, Landscape and Heritage (CDCPP).



IFLA EUROPE

INTERNATIONAL FEDERATION
OF LANDSCAPE ARCHITECTS

Professional Practice Committee main activities

Agricultural Landscapes Working Group

Landscape Architects engage in agricultural projects with “principle-based holistic design.” Landscape architects and designers can “design for management, ecosystem mimicry, beauty, economic and social factors, and quality of life.” Landscape architecture is about creating safe, sustainable and resilient landscapes, landscapes that evolve but endure over time.

New European Bauhaus Initiative - IFLA Europe is official partner

- to gather a diversity of professionals and disciplines in generating ideas, either within the organisation or by engaging with other actors through conversations regarding the New European Bauhaus,
- to identify inspirational projects, practices or concepts for the New European Bauhaus initiative that can be openly shared through the New European Bauhaus website;
- to engage with citizens to discuss and collect expectations on the qualitative transformation of living spaces and associated life styles, to identify concrete challenges to be addressed in the frame of this initiative and to share the outcomes through the New European Bauhaus website;

design phase will last until summer 2021



IFLA EUROPE

INTERNATIONAL FEDERATION
OF LANDSCAPE ARCHITECTS

2015 - First EU Urban Green Infrastructure Conference, Vienna, Austria – “Green tram and railway transport”

Cities that understand and use **Green Infrastructure** for all its multiple benefits realise that it can be integrated into parts of the **urban fabric** that many conventional engineers and designers may well exclude. Creating **transport networks** that add to the Green Infrastructure network of urban areas was an **important** part of the **discussion**.

2017 - EKLIPSE Report Nature-based Solutions to promote climate resilience in urban areas was produced entitled “An impact evaluation framework to support planning and evaluation of nature-based solutions projects”

- ✓ IFLA Europe provides expertise to EKLIPSE group.
- ✓ In 2017 IFLA Europe and our Delegate from Israel Leor Lovinger represented our organisation and the profession in 15-member expert group on EKLIPSE ‘Nature Based Solutions’ (NBS).
- ✓ A scientific Report prepared by the EU Funded project EKLIPSE and the Expert Working Group on Nature-based Solutions to promote climate resilience in urban areas was produced entitled **“An impact evaluation framework to support planning and evaluation of nature-based solutions projects”**
- ✓ Full report available http://www.eclipse-mechanism.eu/nbs_report



IFLA EUROPE

INTERNATIONAL FEDERATION
OF LANDSCAPE ARCHITECTS

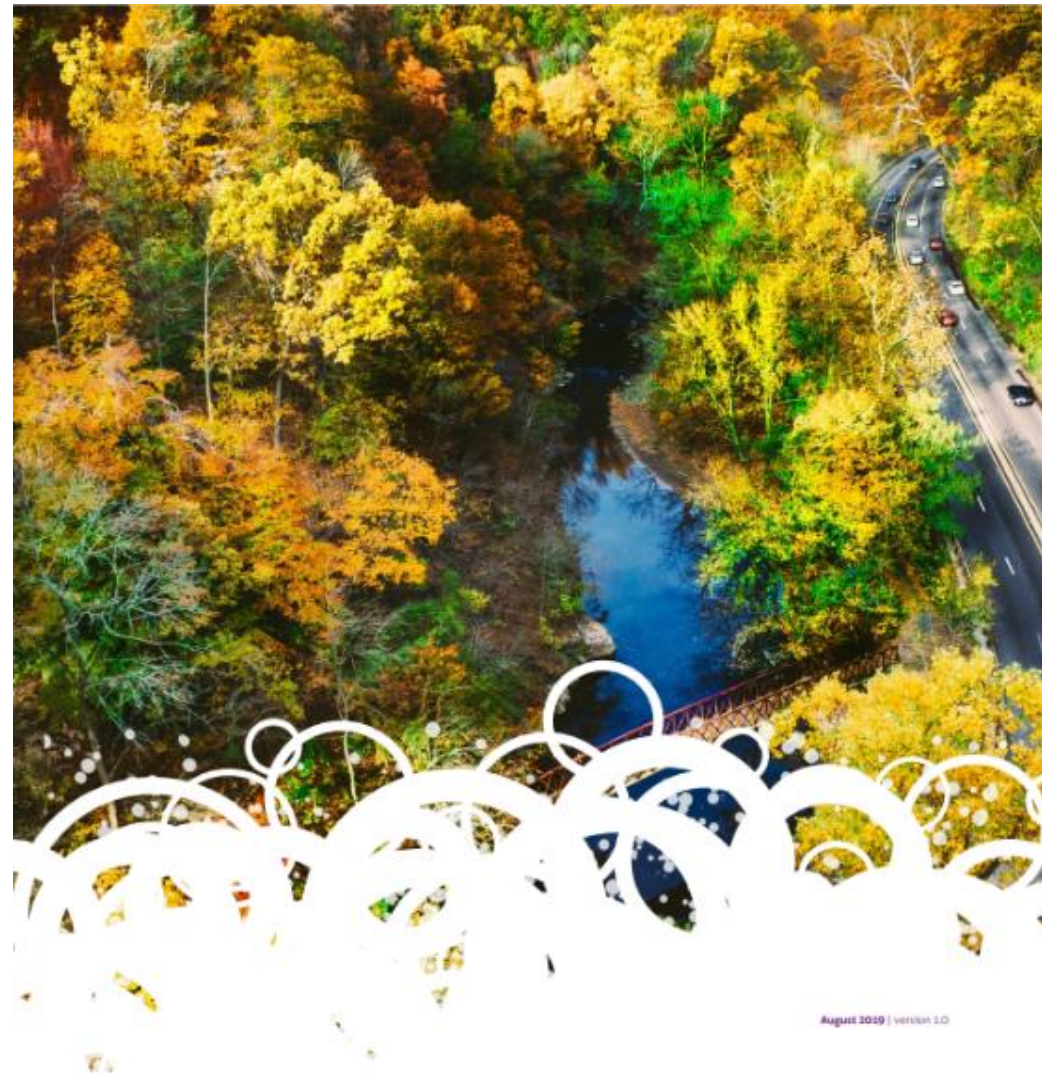
2019 - BGI Manual and BiodivERsA

IFLA Europe in tandem with BiodivERsA, the JNCC, Natural Resources Wales and Except Integrated Sustainability collaborated to scope the content and structure of a **BGI Manual to guide the implementation of current biodiversity and resilience research into the design, construction and maintenance of BGI.**

The Manual targets a number of selected groups: policymakers and decision makers in regional and local area

Development, project managers responsible for delivery of specific strategic infrastructure, designers working on projects at all scales, construction managers, operatives, maintenance managers and staff.

<https://hub.jncc.gov.uk/assets/354f40aa-1481-4b7f-a1eb-82c806893409#BGI-Manual-Executive-Summary.pdf>



August 2019 | version 1.0

› ROADMAP FOR THE BGI MANUAL

Bridging the knowledge gap in the field of Blue Green Infrastructures

EXECUTIVE SUMMARY





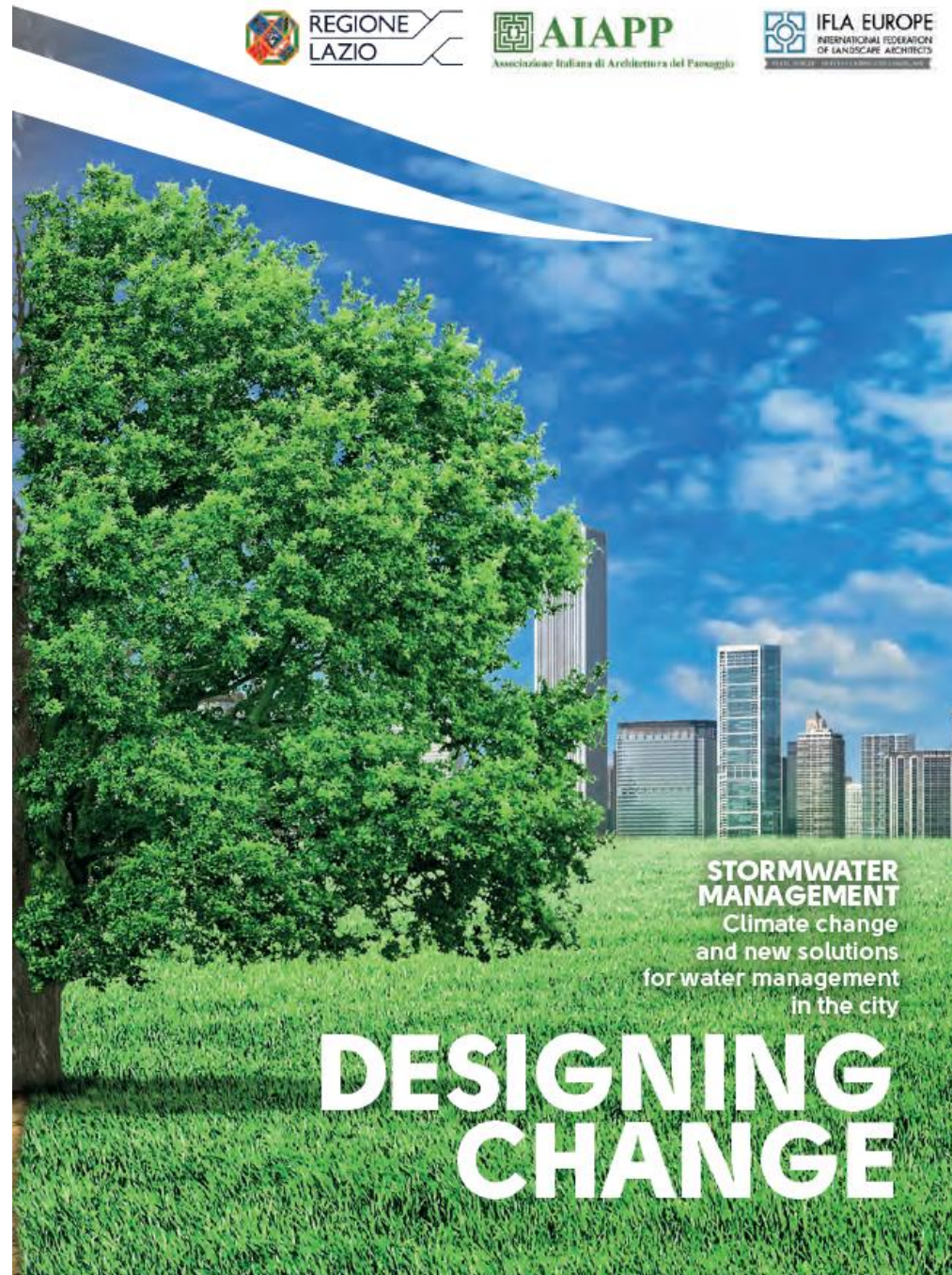
IFLA EUROPE

INTERNATIONAL FEDERATION
OF LANDSCAPE ARCHITECTS

2019 - Booklet on Stormwater Management

The purpose of the research is to **spread awareness and inform**, based on experience, about **responsible water management practices and constructive technical solutions** that allow us to better respond to critical issues generated by changes in global climate, the pollution of waterways and aquifers, excessive waterproofing of soil, and wastage.

Brochure was produced by our member AIAPP Italy (Italian Association of Landscape Architecture), with support of Lazio Region and in collaboration with IFLA Europe.





IFLA EUROPE

INTERNATIONAL FEDERATION
OF LANDSCAPE ARCHITECTS

Our main objectives

- Make IFLA EUROPE an **EU partner in educating and motivating** people in order to trigger a change in behaviour in relation with the environment and the climate change adaptation and the profession
- Promote the **new EU Biodiversity Strategy goals**
- Follow the **Assessment of the National and Energy and Climate Plans** (ongoing, with the initial deadline in June 2020) and **act on its translation into the Proposal for the 8th environmental action programme**
- Establish and promote the role of the landscape architecture field and, of course, the role of the landscape architect within the constructions domain which will be embedded now in the **Carbon border tax**
- Understand and tackle the **EU future financial policy** in direct relation to IFLA Europe's mission
- Enhance the integration of the **EU Strategy on Green Infrastructure** in the professional practice of European landscape architects
- Analyse EU policies concerning green infrastructure, with a specific focus on the **EU Strategy on Green Infrastructure, the EU Biodiversity Strategy and the European Green Deal**
- **Support the implementation of green infrastructure projects** by landscape architects and to promote landscape architects as key actors of planning, designing and implementing nature-based solutions.
- Cooperation with the **Climate Heritage Network-MOU**



IFLA EUROPE

INTERNATIONAL FEDERATION
OF LANDSCAPE ARCHITECTS

The role of Landscape Architects in the sustainable design

health well-being micro-climate

environment natural processes

sustainability

climate changes resource management

social context democracy

transparency visual value

harmony spatial order heritage

culture cultural landscape



IFLA EUROPE

INTERNATIONAL FEDERATION
OF LANDSCAPE ARCHITECTS

... designing with nature



The Hanging Gardens of Babylon



Serpentine Gallery Pavilion by Piet Oudolf



Formal garden of Augustusburg Palaces in Brühl



Park am Gleisdreieck in Berlin



IFLA EUROPE

INTERNATIONAL FEDERATION
OF LANDSCAPE ARCHITECTS

... from the ground to the roof



Project: Vertical Forest - Eindhoven



Project: Ebben Inspyrium Roof Garden Cuijk





... introducing a new approach for food



Project: The Greenest of the Green block in Helsinki
<http://landezine.com/>

Project:
Socially Conscious
Vertical Harvesting





IFLA EUROPE

INTERNATIONAL FEDERATION
OF LANDSCAPE ARCHITECTS

... and for biodiversity



Project:
Urbancows
in Pärnu



Project:
Arninge-Ullna
Riparian Forest
Park



IFLA EUROPE

INTERNATIONAL FEDERATION
OF LANDSCAPE ARCHITECTS

... bringing back nature



Project: Murg-Auen-Park, Frauenfeld



Project:
Superpositions
Renaturation of
the river Aire



... and connecting nature with cities



Project:
Park Lingezen





IFLA EUROPE

INTERNATIONAL FEDERATION
OF LANDSCAPE ARCHITECTS

Thank you!

Diana Culescu, IFLA Europe Secretary General (Romania)

Daniela Micanovic, IFLA Europe Executive Secretary (Belgium)

<https://iflaeurope.eu/>